



Lacey Drive

£300,000

A one bedroom, modern flat available chain free in Edgware Green with Davidson Frost-Wellings.

The flat has a bright reception room with doors leading to a private balcony, and an L-shaped adjoining kitchen. There is also a double bedroom with built-in wardrobes, a modern family bathroom and a spacious utility cupboard.

Leasehold with over 950 years remaining.

Ground Rent of £200 per year.

Service Charge of approximately £995 every six months.

Barnet Council Tax Band D.

Viewing

Please contact our Davidson Frost-Wellings Office on 020 8954 8806 if you wish to arrange a viewing appointment for this property or require further information.

- One bedroom
- Private balcony
- Chain free
- Excellent condition
- Modern building with lift
- Long leasehold



1



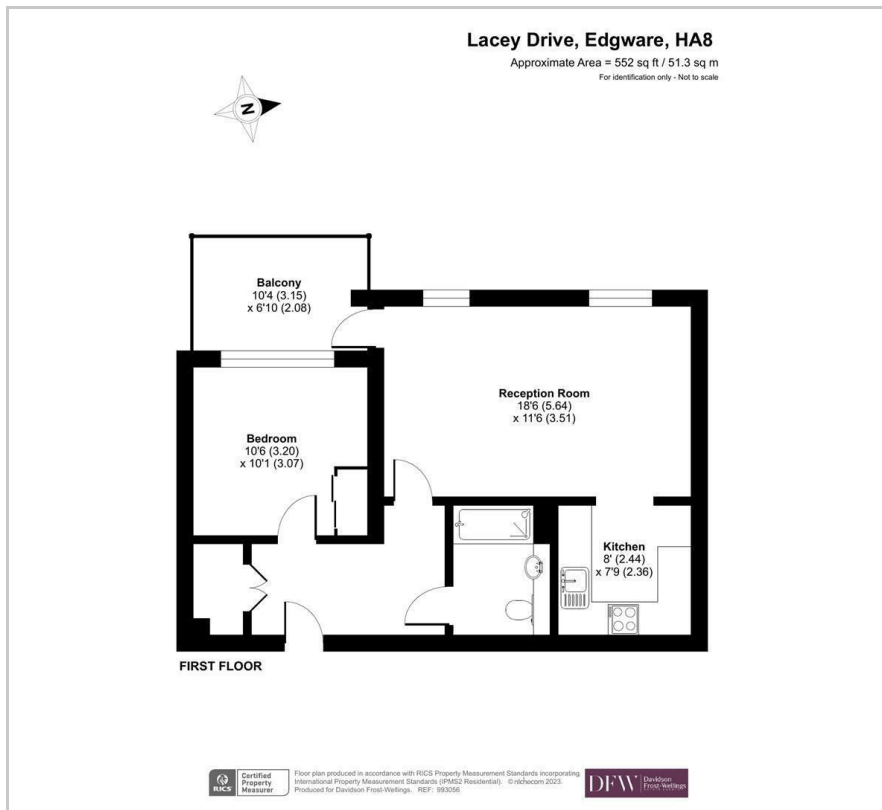
1



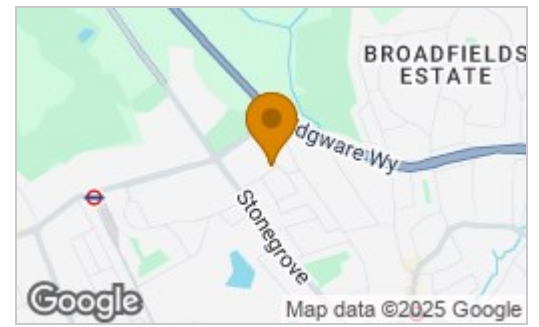
1



Floor Plan



Area Map



Energy Efficiency Rating

| | Current | Potential |
|--|-------------------------|-----------|
| <i>Very energy efficient - lower running costs</i> | | |
| (92 plus) A | | |
| (81-91) B | | |
| (69-80) C | | |
| (55-68) D | | |
| (39-54) E | | |
| (21-38) F | | |
| (1-20) G | | |
| <i>Not energy efficient - higher running costs</i> | | |
| England & Wales | EU Directive 2002/91/EC | |



These particulars, whilst believed to be accurate are set out as a general outline only for guidance and do not constitute any part of an offer or contract. Intending purchasers should not rely on them as statements of representation of fact, but must satisfy themselves by inspection or otherwise as to their accuracy. No person in this firm's employment has the authority to make or give any representation or warranty in respect of the property.